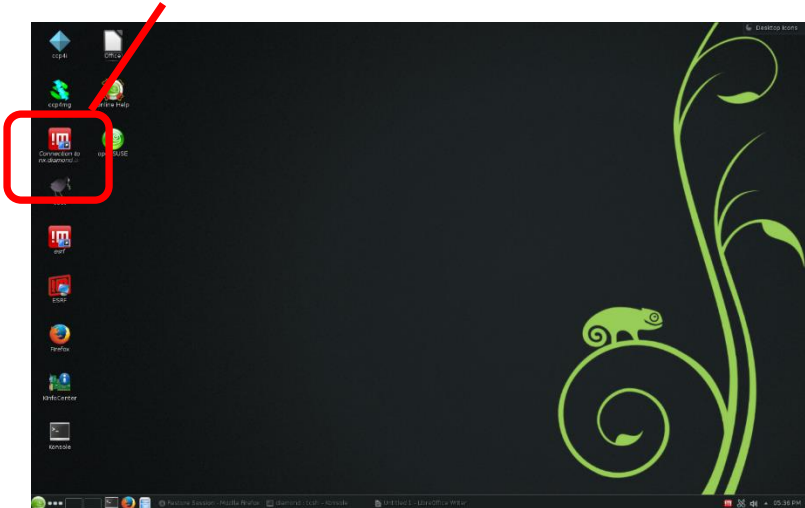
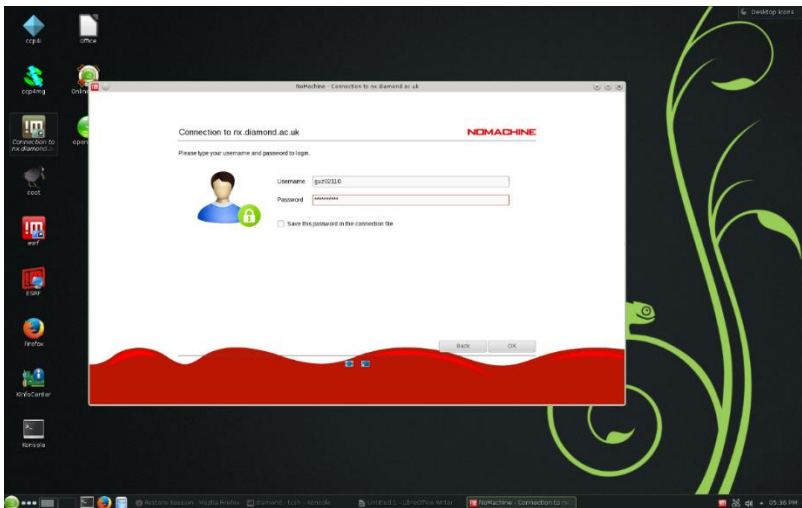


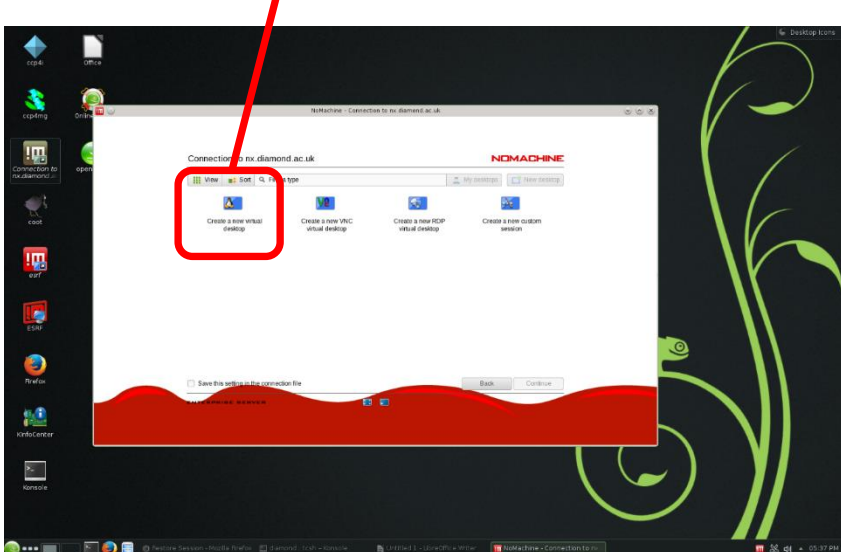
1) Open MXcube connection to diamond



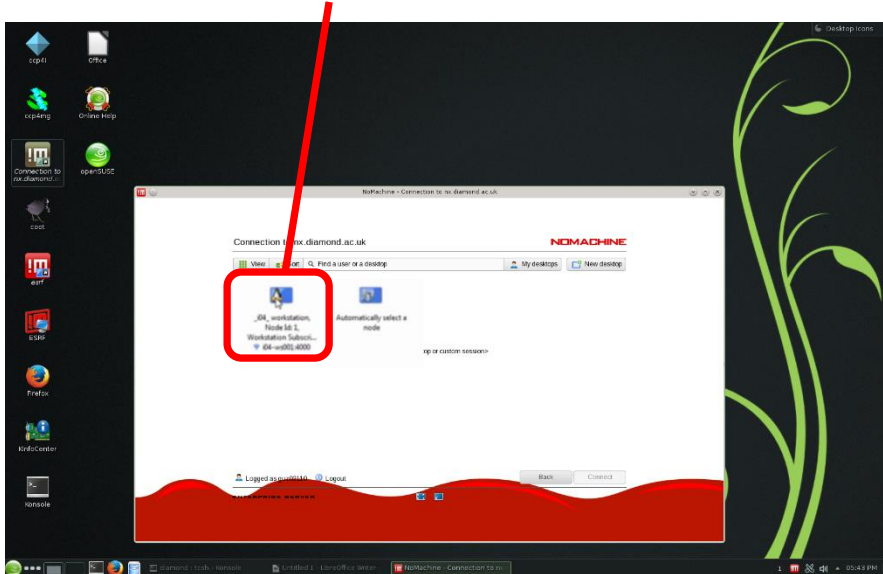
2) Enter diamond Fed ID and password



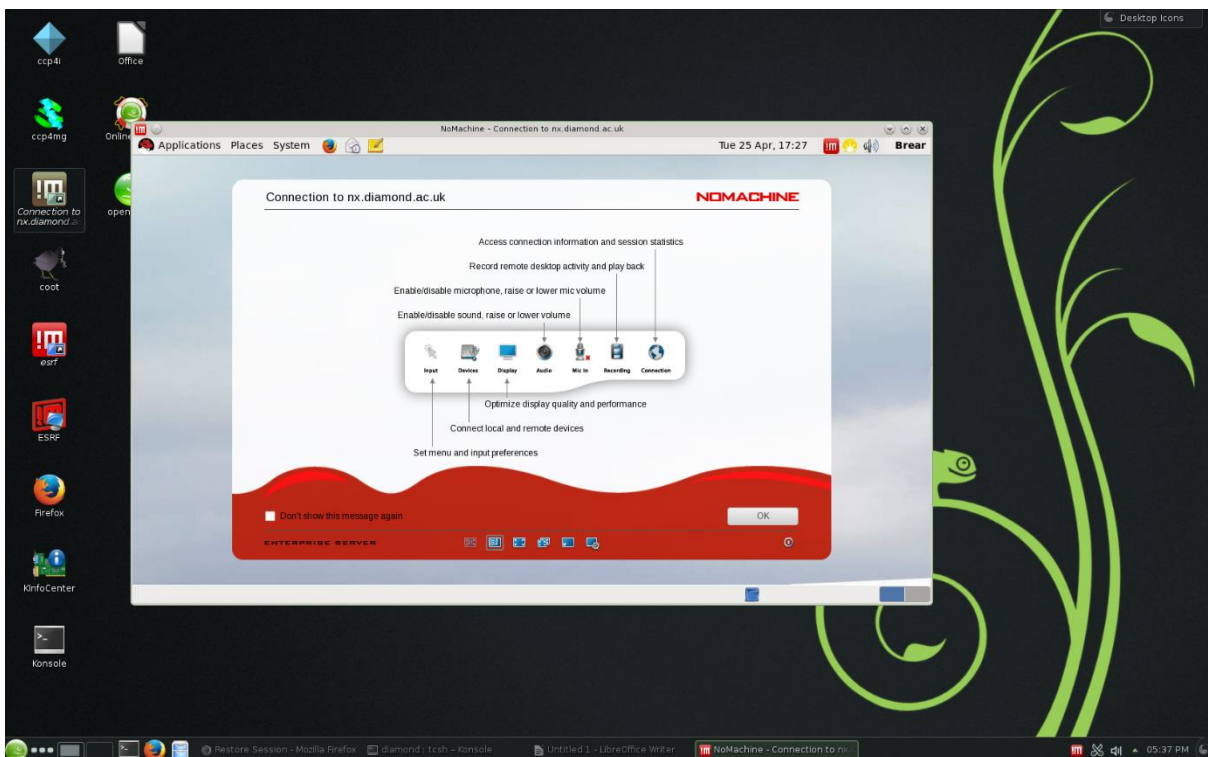
3) Select create a new virtual desktop



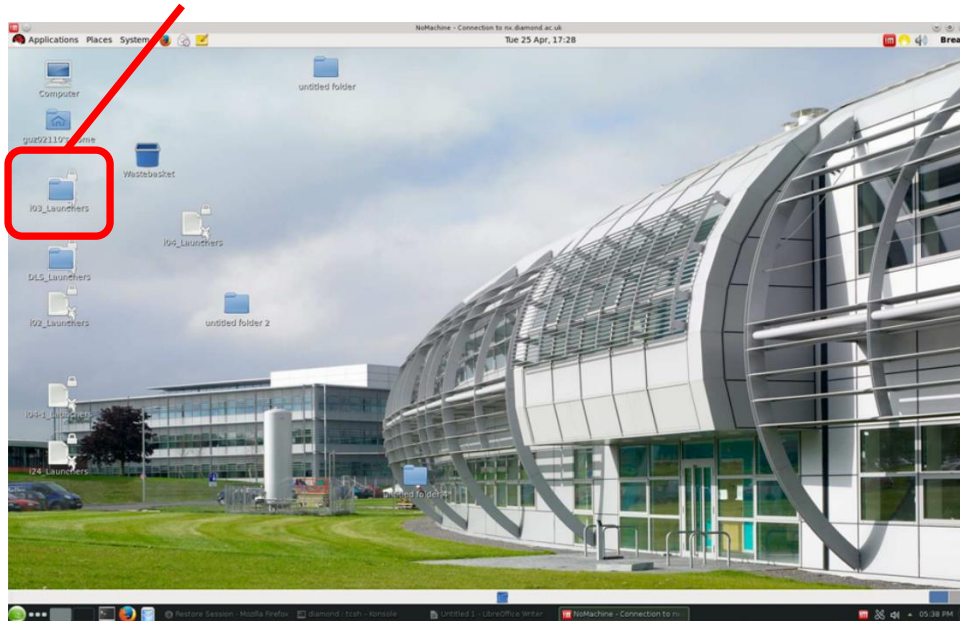
4) Select the beam time you are trying to access



5) There will then be a few menu panels press OK



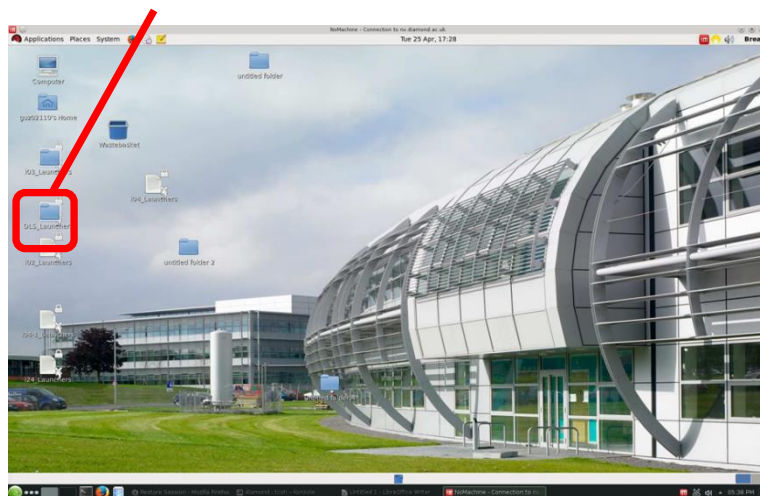
6) Select i03\_Launcher (or relevant beamline)



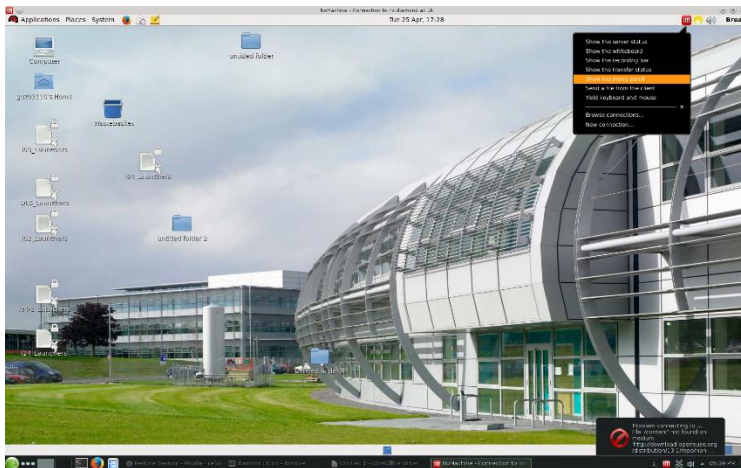
7) Select Start GDA client- Follow GDA manual



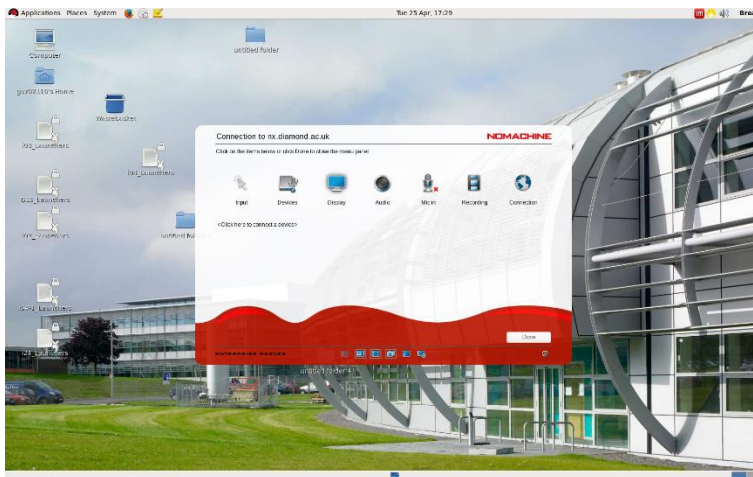
8) Select DLS\_Launcher folder and launch ADXV viewer and internet (ispyb)



9) Click on icon then show menu panel



10) Click on display



11) Full screen on all screens

